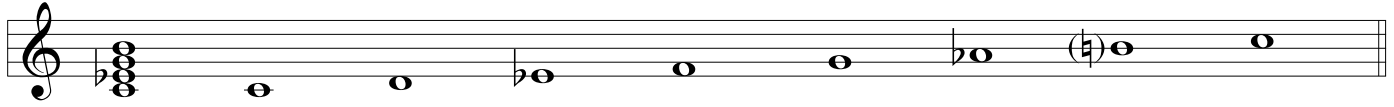


MODES OF THE HARMONIC MINOR

MODE 1: HARMONIC MINOR ($\flat 3, \flat 6$) (HERE, THE FIRST MODE OF C HARMONIC MINOR)



Cm1A7

MODE 2: LOCRIAN #6 ($\flat 2, \flat 3, \flat 5, \flat 7$) (HERE, THE SECOND MODE OF Bb HARMONIC MINOR)



Cm17b5

MODE 3: MAJOR #5 ($\sharp 5$) (HERE, THE THIRD MODE OF A HARMONIC MINOR)



CMA7#5

MODE 4: DORIAN #4 ($\flat 3, \sharp 4, \flat 7$) (HERE, THE FOURTH MODE OF G HARMONIC MINOR)



Cm17

MODE 5: PHRYGIAN #3 ($\flat 2, \flat 6, \flat 7$) (HERE, THE FIFTH MODE OF F HARMONIC MINOR)



C7

MODE 6: LYDIAN #2 ($\sharp 2, \sharp 4$) (HERE, THE SIXTH MODE OF E HARMONIC MINOR)



CMA7

MODE 7: ALTERED $\flat 7$ ($\flat 2, \flat 3, \flat 4, \flat 5, \flat 6, \flat \flat 7$) (HERE, THE SEVENTH MODE OF Db HARMONIC MINOR)



Cb7