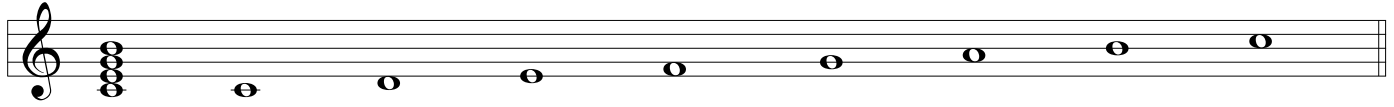


MODES OF THE MAJOR

MODE 1: IONIAN (HERE, THE FIRST MODE OF C MAJOR)



CMA7

MODE 2: DORIAN (b3, b7) (HERE, THE SECOND MODE OF B \flat MAJOR)



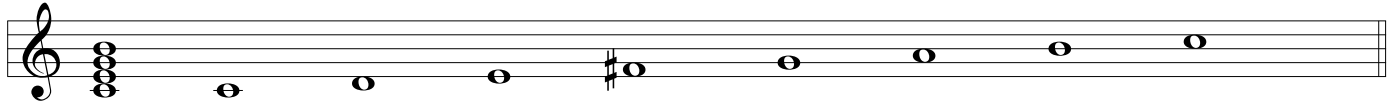
CM7

MODE 3: PHRYGIAN (b2, b3, b6, b7) (HERE, THE THIRD MODE OF A \flat MAJOR)



CM7

MODE 4: LYDIAN (#4) (HERE, THE FOURTH MODE OF G MAJOR)



CMA7

MODE 5: MIXOLYDIAN (b7) (HERE, THE FIFTH MODE OF F MAJOR)



C7

MODE 6: AEOLIAN (b3, b6, b7) (HERE, THE SIXTH MODE OF E \flat MAJOR)



CM7

MODE 7: LOCRIAN (b2, b3, b5, b6, b7) (HERE, THE SEVENTH MODE OF D \flat MAJOR)



CM7b5