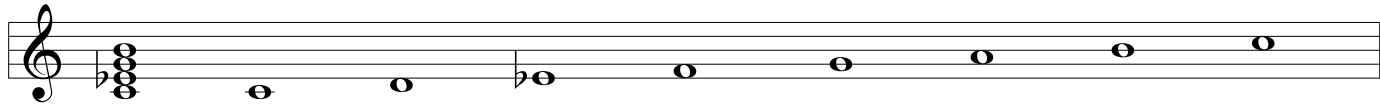


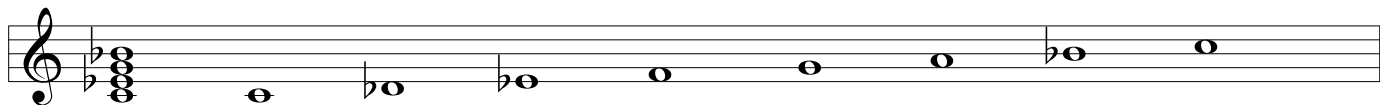
MODES OF THE MELODIC MINOR

MODE 1: MELODIC MINOR ($\flat 3$) (HERE, THE FIRST MODE OF C MELODIC MINOR)



CMI Δ 7

MODE 2: DORIAN ($\flat 2, \flat 3, \flat 7$) (HERE, THE SECOND MODE OF B \flat MELODIC MINOR)



CM17

MODE 3: LYDIAN AUGMENTED ($\sharp 4, \sharp 5$) (HERE, THE THIRD MODE OF A MELODIC MINOR)



CM Δ 7 $\sharp 5$

MODE 4: LYDIAN DOMINANT ($\sharp 4, \flat 7$) (HERE, THE FOURTH MODE OF G MELODIC MINOR)



C7

MODE 5: AEOLIAN DOMINANT ($\flat 6, \flat 7$) (HERE, THE FIFTH MODE OF F MELODIC MINOR)



C7

MODE 6: LOCRIAN ($\sharp 2, \flat 3, \flat 5, \flat 7$) (HERE, THE SIXTH MODE OF Eb MELODIC MINOR)



CM17 $\flat 5$

MODE 7: ALTERED, SUPER LOCRIAN ($\flat 2, \flat 3, \flat 4, \flat 5, \flat 6, \flat 7$) (HERE, THE SEVENTH MODE OF Db MELODIC MINOR)



CM17 $\flat 5$